

# Devon



**2 Story with 4 bedrooms & 4 total bathrooms**

Main Level Sq. Ft.: 1,161  
 Upper Level Sq. Ft.: 1,379  
 Total Finished Sq. Ft.: 2,540

Style: *Craftsman*  
 Standard Foundation: *Basement*

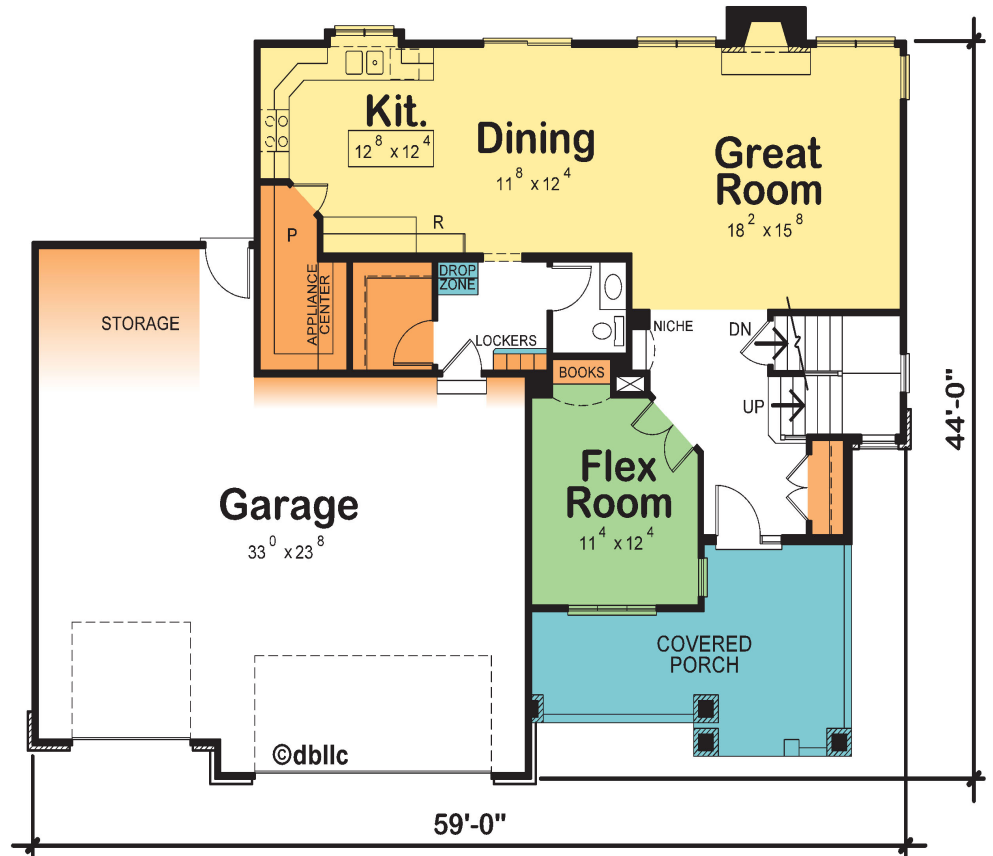
Max Width: 59'-0" Wide  
 Max Depth: 44'-0" Deep  
 Main Level Ceiling Ht: 9'0"  
 Upper Level Ceiling Ht: 8'0"  
 Ridge Height: 29'9"

Front Garage Size: 3 stalls  
 Garage Sq. Ft.: 899

Kitchen Size: 12'-8" x 12'-4"  
 Kitchen Island: 5'-9" x 2'-2"  
 Breakfast Size: 11'-8" x 12'-4"

Master Suite Size: 15'-0" x 15'-8"  
 Master Suite Closet Size: 18'-0" X 5'-8"  
 Master Suite Bath Size: 13'-0" X 11'-4"

Laundry Size: 9'-6" x 9'-6"



**Livability**  
 at a Glance®

- Storing
- Entertaining
- Flexible Living
- De-Stressing



Visit Enzoco Homes at [Enzoco.com](http://Enzoco.com)

All elevations are illustrative and some details may be optional.  
 All plans copyrighted and cannot be used or duplicated without approval.

# Devon

2 Story with 4 bedrooms & 4 total bathrooms

Main Level Sq. Ft.: 1,161  
Upper Level Sq. Ft.: 1,379  
Total Finished Sq. Ft.: 2,540

