

Mayview



**1 1/2 Story with 3 bedrooms
& 3 total bathrooms**

Main Level Sq. Ft.: 1,832
Upper Level Sq. Ft.: 364
Total Finished Sq. Ft.: 2,196

Opt. Bonus Room adds Sq. Ft.: 322
Total Living Sq. Ft.: 2,518

Style: Traditional
Standard Foundation: Basement

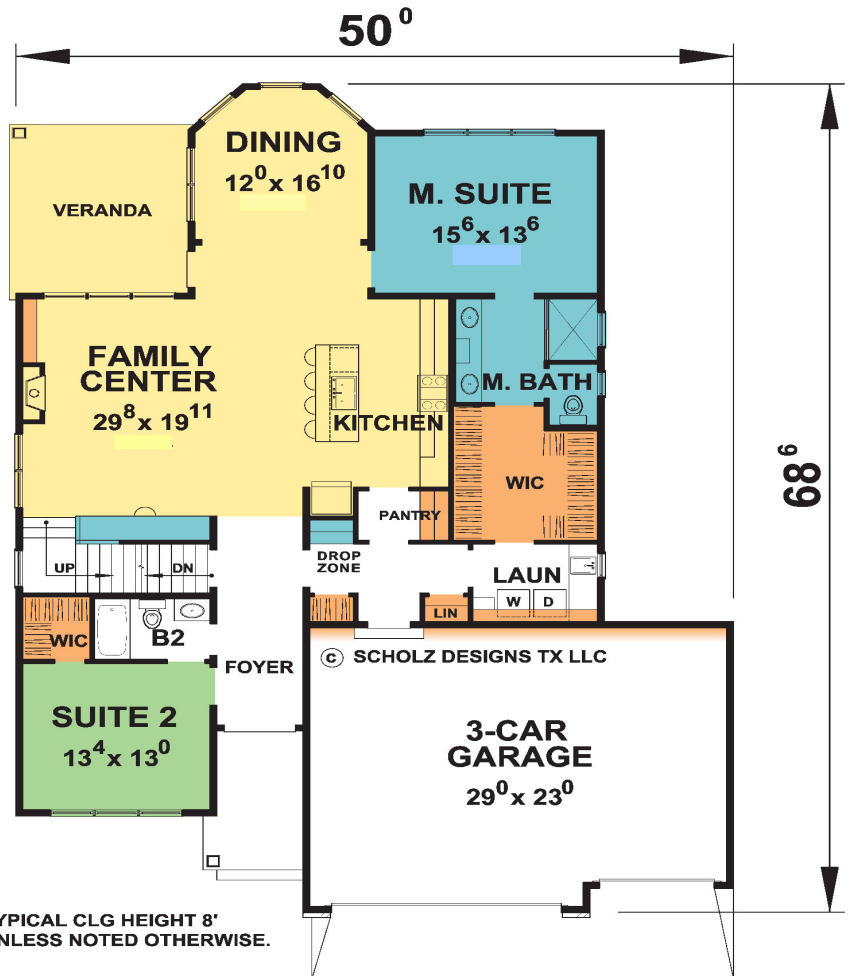
Max Width: 50'-0" Wide
Max Depth: 68'-6" Deep
Main Level Ceiling Ht: 8'-0"
Upper Level Ceiling Ht: 8'-0"
Ridge Height: 31'-8"

Front Garage Size: 3 stalls
Garage Sq. Ft.: 686

Kitchen Size: 0'-0" x 0'-0"
Kitchen Island: 8'-0" x 3'-0"
Breakfast Size: 0'-0" x 0'-0"
Formal Dining Room Size: 12'-0" x 16'-10"

Master Suite Size: 15'-6" x 13'-6"
Master Suite Closet Size: 10'-0" x 11'-0"
Master Suite Bath Size: 10'-0" x 8'-6"

Laundry Size: 8'-0" x 6'-5"



ENZOCO
Homes

Visit Enzoco Homes at Enzoco.com

All elevations are illustrative and some details may be optional.
All plans copyrighted and cannot be used or duplicated without approval.

Mayview

**1 1/2 Story with 3 bedrooms
& 3 total bathrooms**

Main Level Sq. Ft.: 1,832

Upper Level Sq. Ft.: 364

Total Finished Sq. Ft.: 2,196

Opt. Bonus Room adds Sq. Ft.: 322

Total Living Sq. Ft.: 2,518

