

# Gatepost



**2 Story with 4 bedrooms & 4 total bathrooms**

Main Level Sq. Ft.: 1,173  
 Upper Level Sq. Ft.: 1,354  
 Total Finished Sq. Ft.: 2,527

Style: *Craftsman*  
 Standard Foundation: *Basement*

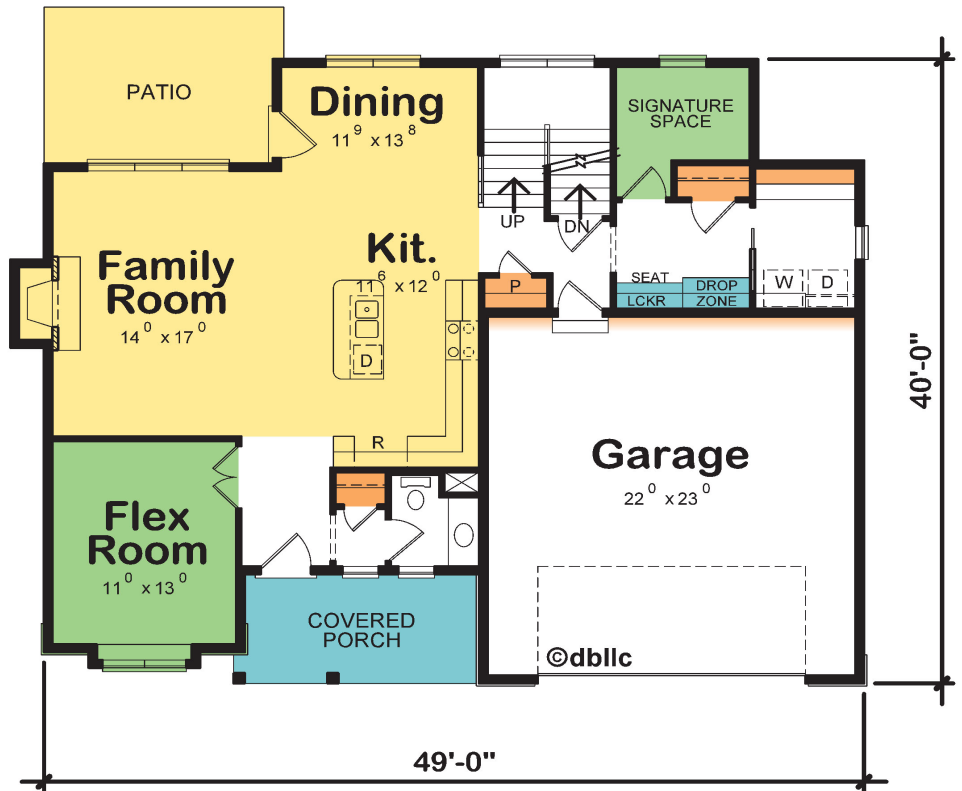
Max Width: 49'-0" Wide  
 Max Depth: 40'-8" Deep  
 Main Level Ceiling Ht: 9'0"  
 Upper Level Ceiling Ht: 8'0"  
 Ridge Height: 3'10"

Front Garage Size: 2 stalls  
 Garage Sq. Ft.: 532

Kitchen Size: 11'-5" x 12'-0"  
 Kitchen Island: 3'-0" x 6'-4"  
 Breakfast Size: 11'-9" x 13'-8"

Master Suite Size: 13'-4" x 15'-0"  
 Master Suite Closet Size: 11'-0" x 7'-0"  
 Master Suite Bath Size: 11'-0" x 7'-8"

Laundry Size: 6'-0" x 9'-0"



**Livability**  
 at a Glance®

- Storing
- Entertaining
- Flexible Living
- De-Stressing



Visit Enzoco Homes at [Enzoco.com](http://Enzoco.com)

All elevations are illustrative and some details may be optional.  
 All plans copyrighted and cannot be used or duplicated without approval.

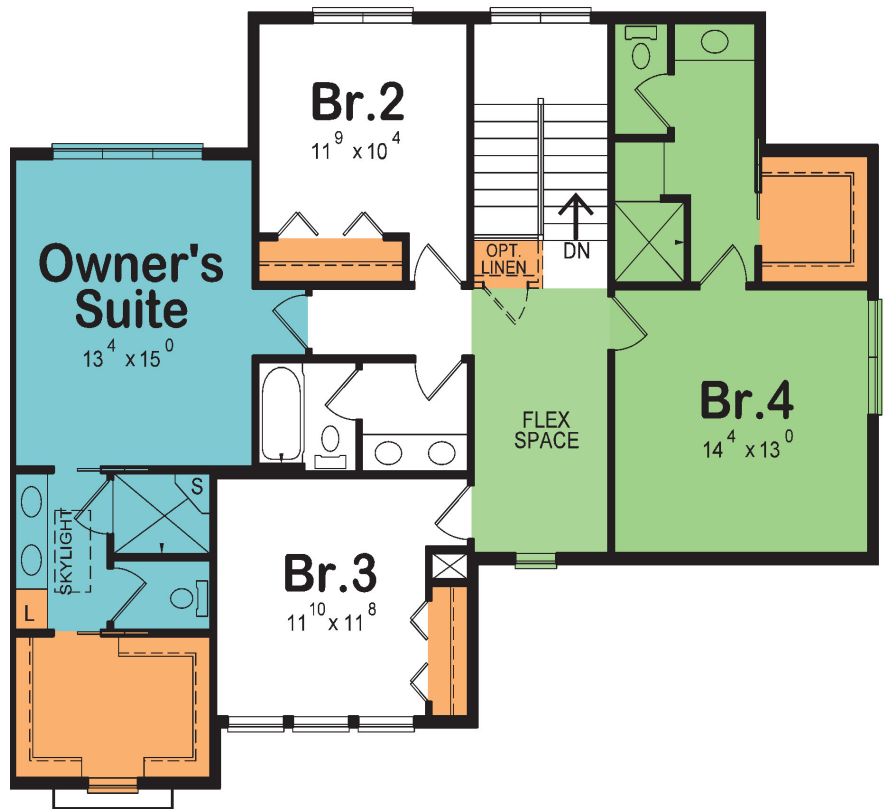
# Gatepost

2 Story with 4 bedrooms & 4 total bathrooms

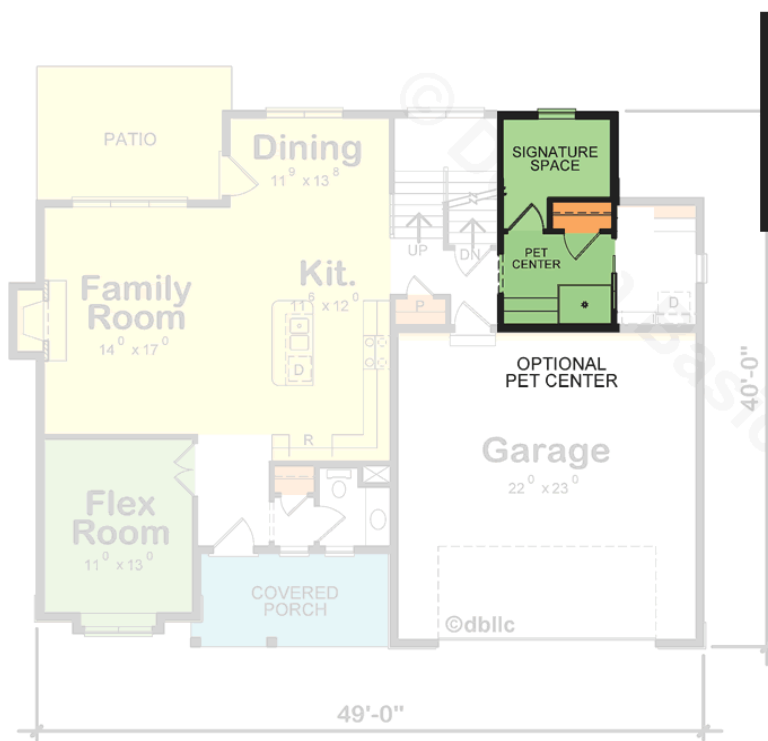
Main Level Sq. Ft.: 1,173

Upper Level Sq. Ft.: 1,354

Total Finished Sq. Ft.: 2,527



## Main Level Floor Plan Options



Signature Space™

It's your home – put your signature on it! Here's a space you can tailor for what's most important to you!



Wine room



Pet Center



Specialized storage

**Other Suggested Uses:**

- Technology Center
- Another bathroom
- Hobby/craft area
- 2<sup>nd</sup> laundry room
- Safe Room
- Mechanicals
- Cedar closet
- Deluxe pantry

Livability at a Glance™